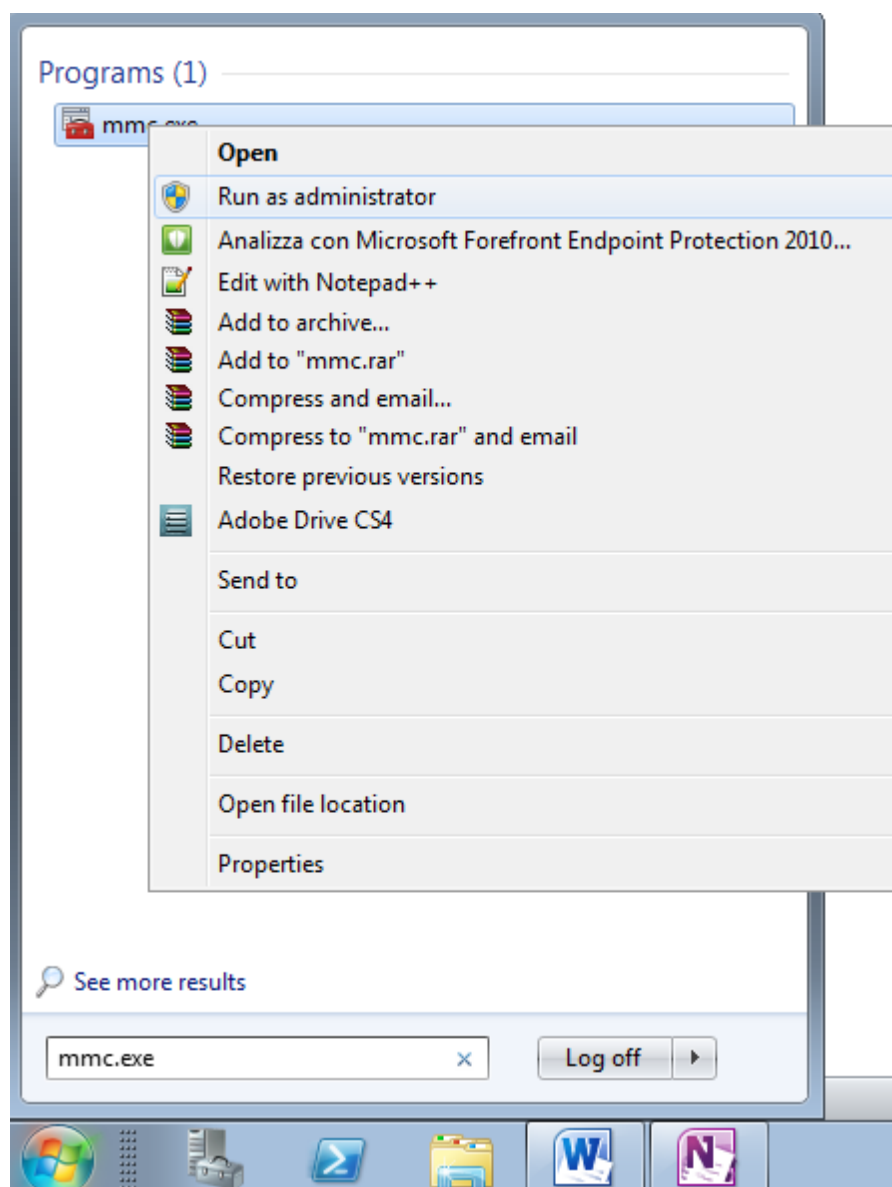
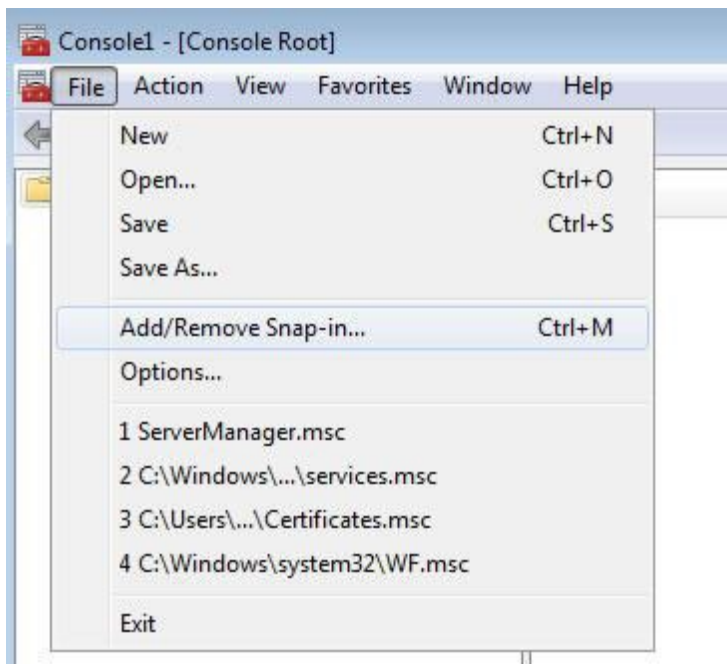


Trust dell'autorità di certificazione UnimcRootCA / UnimcSub1CA

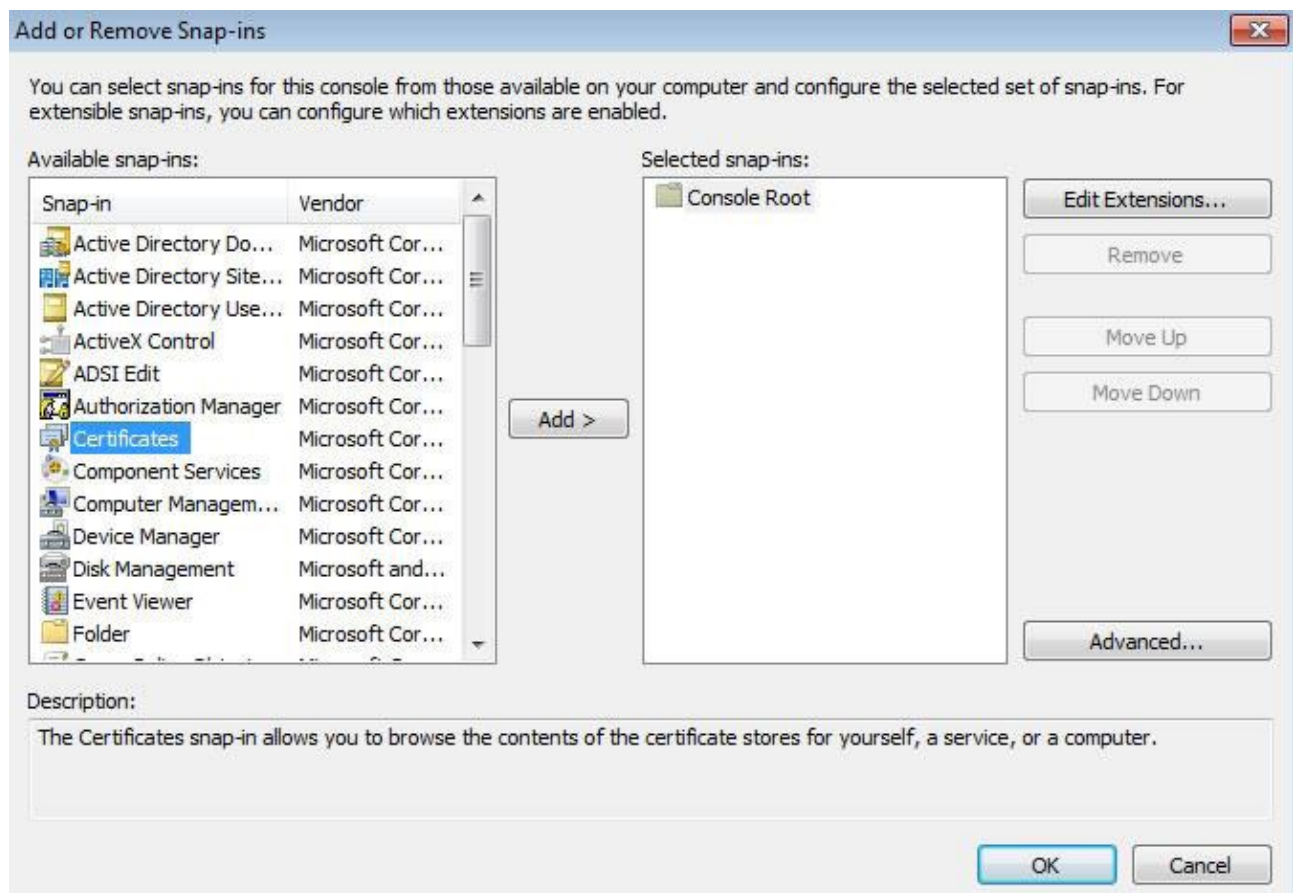
Eeguire il comando "mmc.exe" come amministratore del sistema.



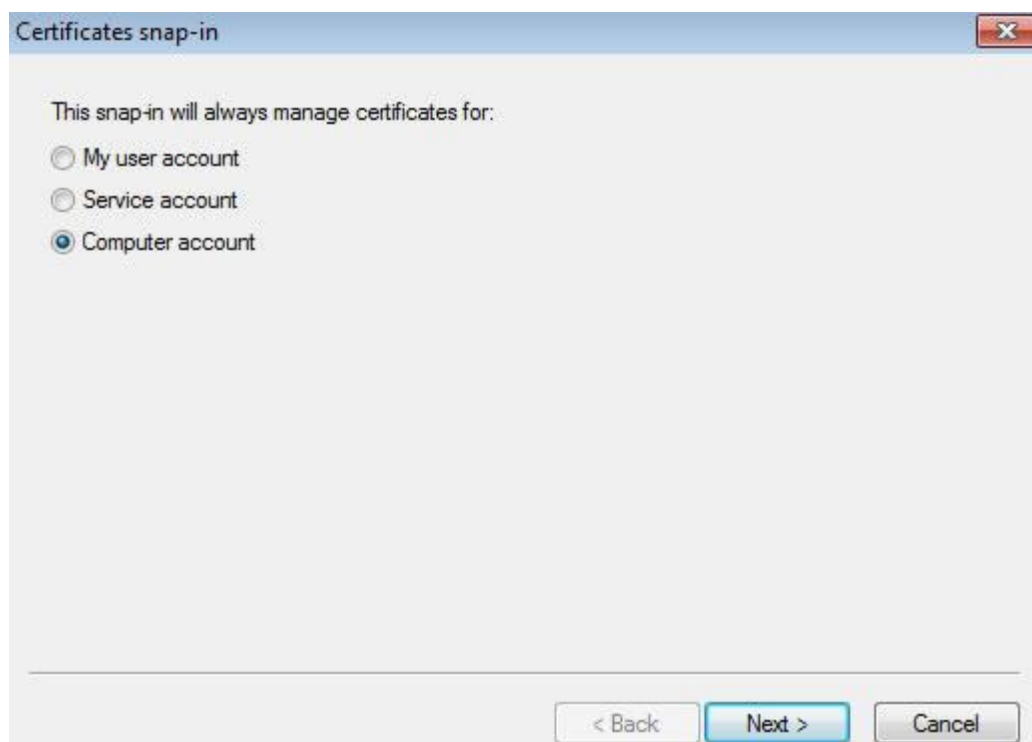
Dal menù file selezionare la voce Add/Remove Snap-in



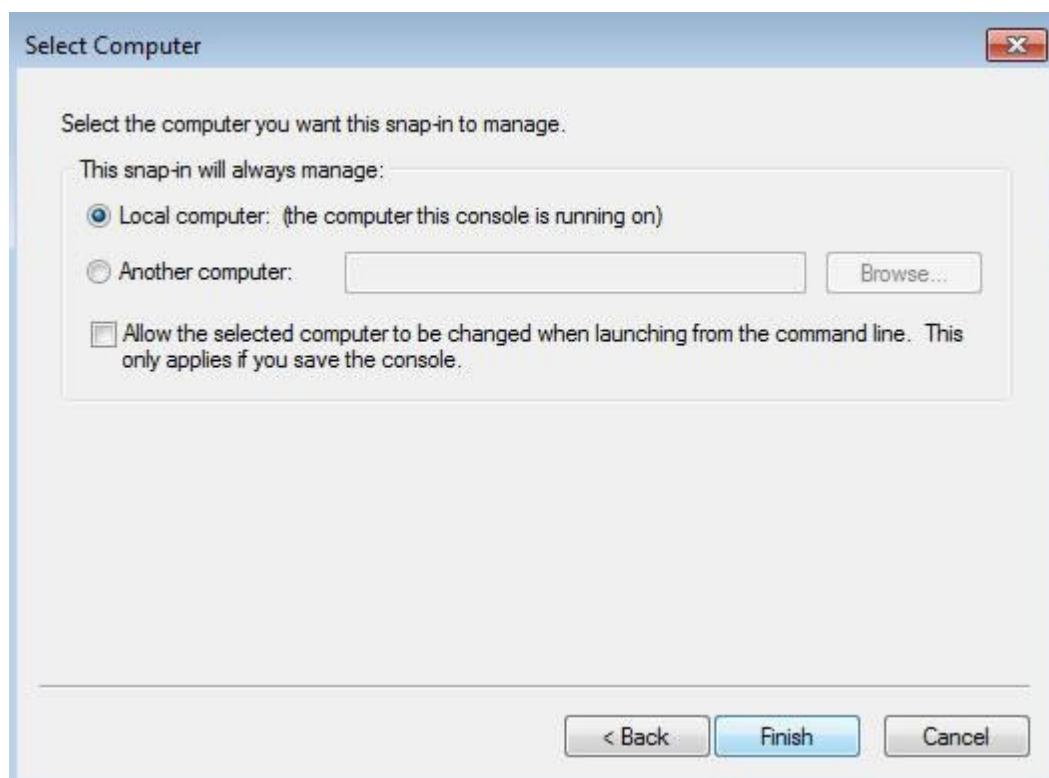
Selezionare lo Snap-in “Certificates” dalla lista degli Snap-in disponibili e premere il pulsante “Add”



Selezionare l'opzione "Computer Account" e premere il pulsante "Next".



Selezionare l'opzione "Local computer (the computer this console is running on)" e premere il pulsante "Finish".

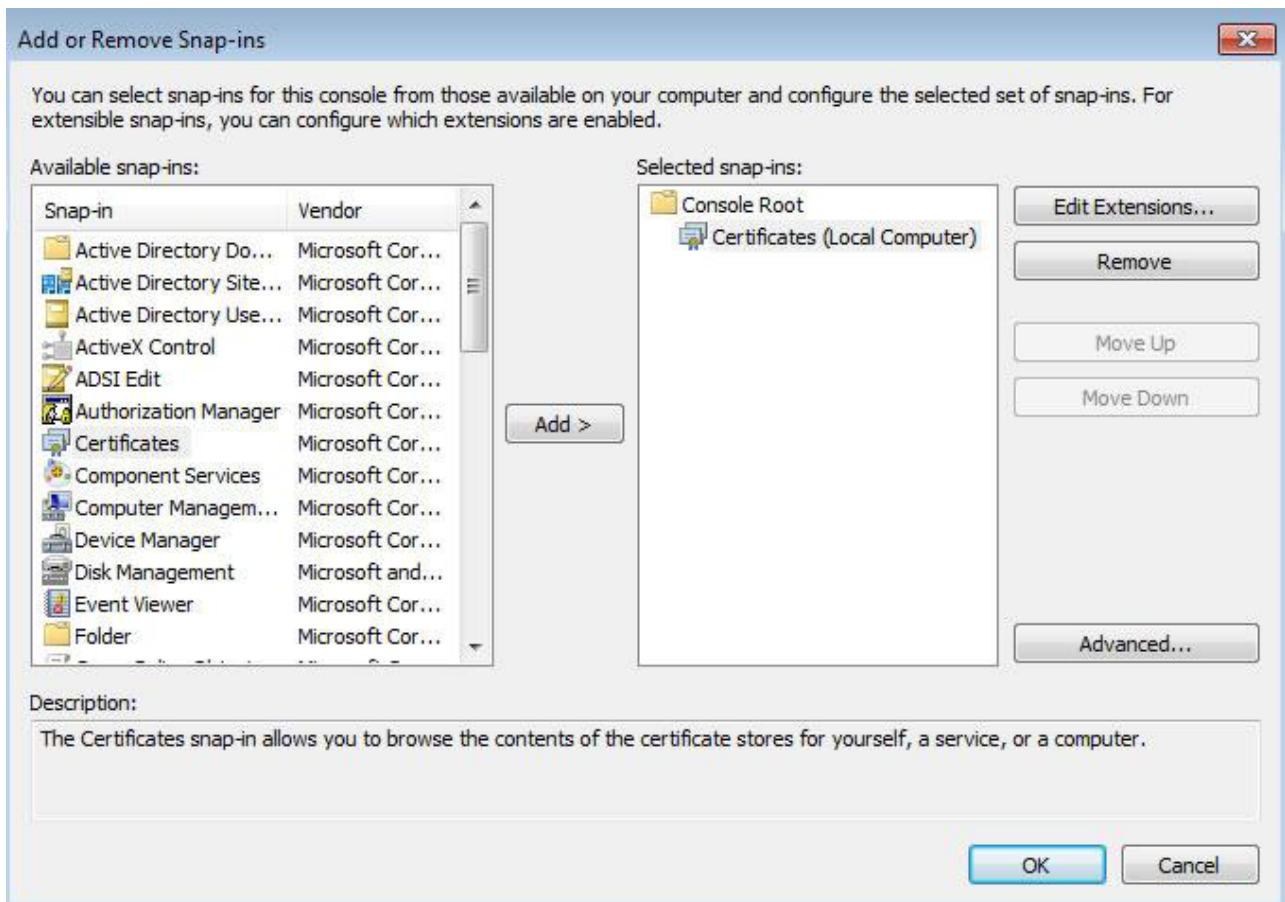


The image shows a Windows-style dialog box titled "Select Computer". The dialog has a standard title bar with a close button (X) in the top right corner. The main content area contains the following elements:

- A label: "Select the computer you want this snap-in to manage."
- A group box titled "This snap-in will always manage:" containing:
 - A radio button selected for "Local computer: (the computer this console is running on)".
 - A radio button for "Another computer:" followed by a text input field and a "Browse..." button.
 - A checkbox for "Allow the selected computer to be changed when launching from the command line. This only applies if you save the console."

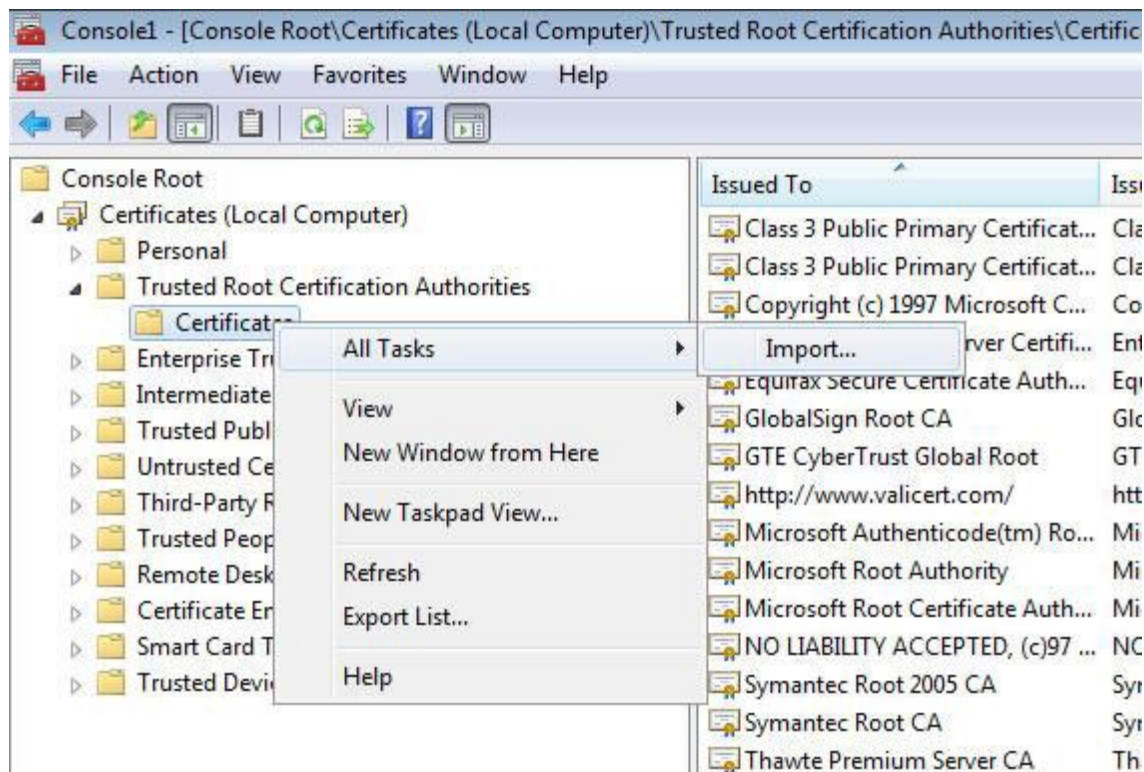
At the bottom of the dialog, there is a horizontal line separating the main content from the buttons. Below the line are three buttons: "< Back", "Finish" (highlighted in blue), and "Cancel".

Premere il pulsante “OK”.



Espandere il menù “Certificates - Local Computer), “Trusted Root Certification Authorities”, “Certificates”.

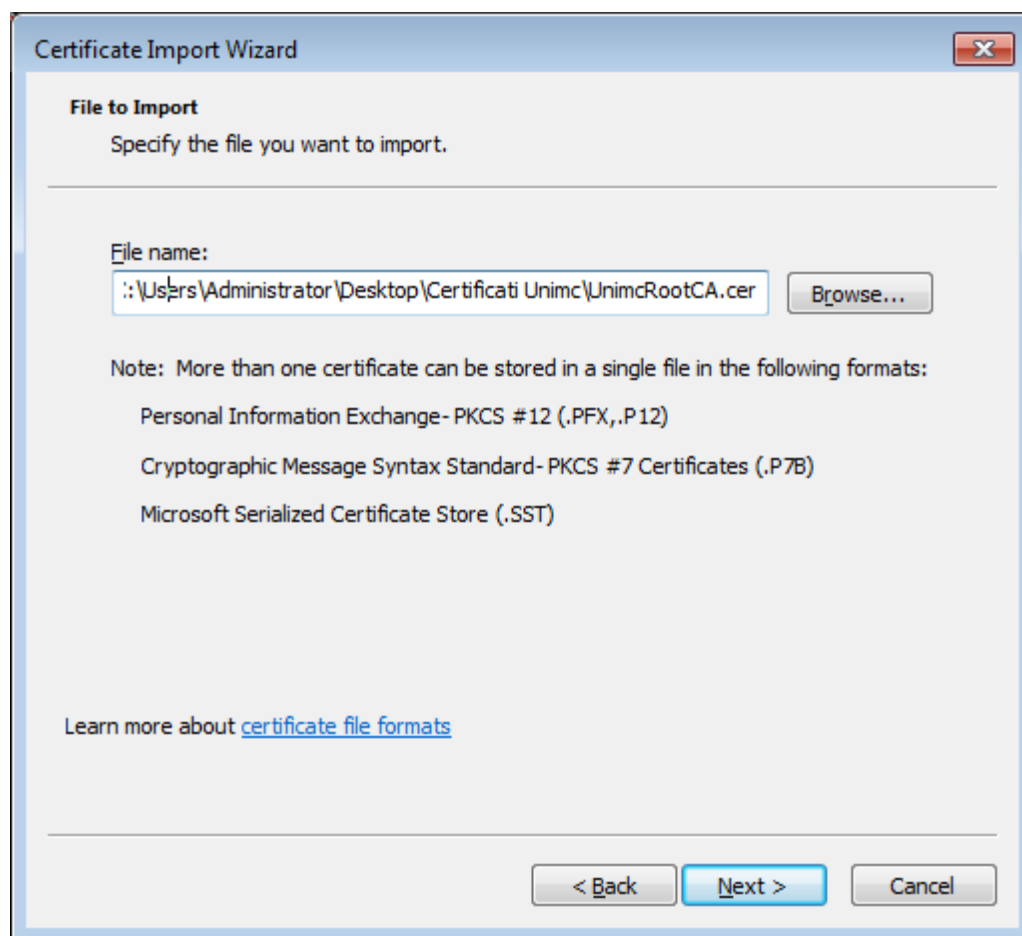
Cliccare con il tasto destro il folder “Cerftificates” e selezionare la voce “All Tasks - Import”.



Premere il pulsante "Next".



Premere il pulsante "Browse" e selezionare il certificato UnimcRootCA.cer



Selezionare l'opzione "Place all certificates in the following store: Trusted Root Certification Authorities" e premere il pulsante "Next".



The image shows a Windows 'Certificate Import Wizard' dialog box. The title bar is blue with the text 'Certificate Import Wizard' and a close button. The main area has a light gray background. At the top, it says 'Certificate Store' followed by 'Certificate stores are system areas where certificates are kept.' Below this is a horizontal line. The text 'Windows can automatically select a certificate store, or you can specify a location for the certificate.' is followed by two radio button options. The first option is 'Automatically select the certificate store based on the type of certificate'. The second option is 'Place all certificates in the following store', which is selected. Below the second option is a text box labeled 'Certificate store:' containing the text 'Trusted Root Certification Authorities'. To the right of the text box is a 'Browse...' button. At the bottom left, there is a link that says 'Learn more about [certificate stores](#)'. At the bottom right, there are three buttons: '< Back', 'Next >', and 'Cancel'.

Certificate Store
Certificate stores are system areas where certificates are kept.

Windows can automatically select a certificate store, or you can specify a location for the certificate.

☐ Automatically select the certificate store based on the type of certificate

☒ Place all certificates in the following store

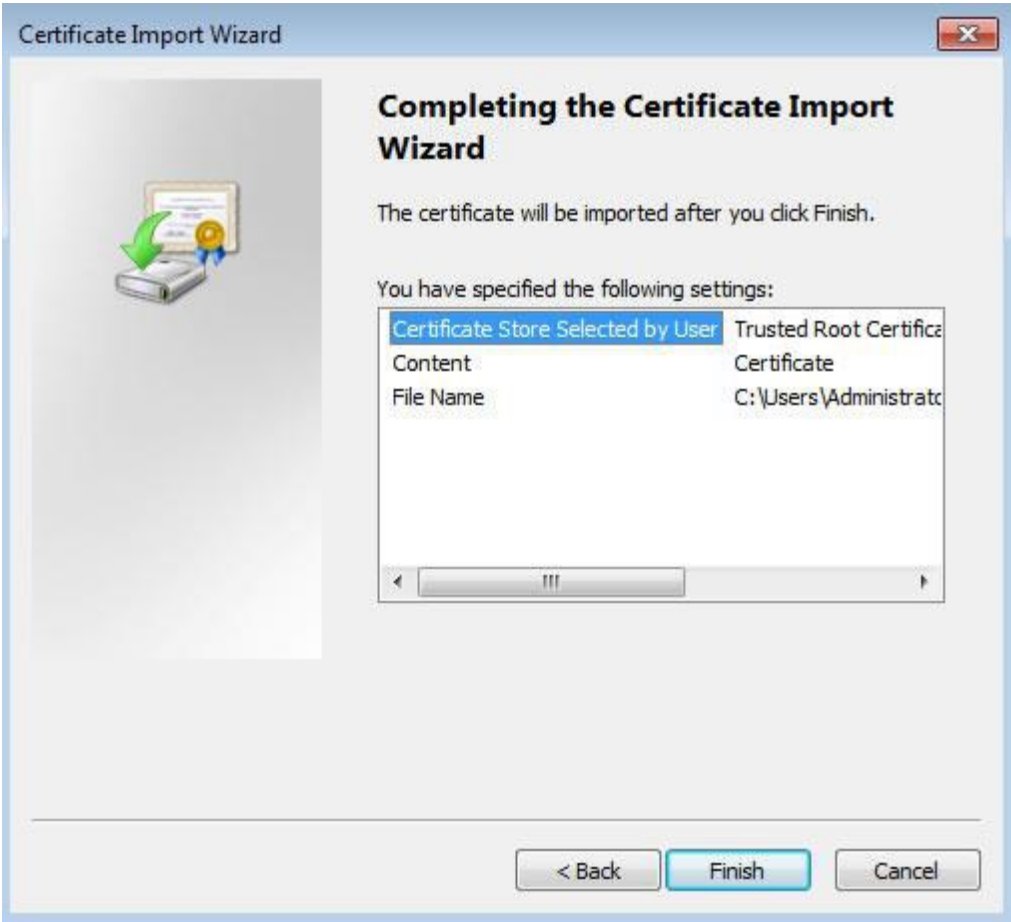
Certificate store:
Trusted Root Certification Authorities

Browse...

Learn more about [certificate stores](#)

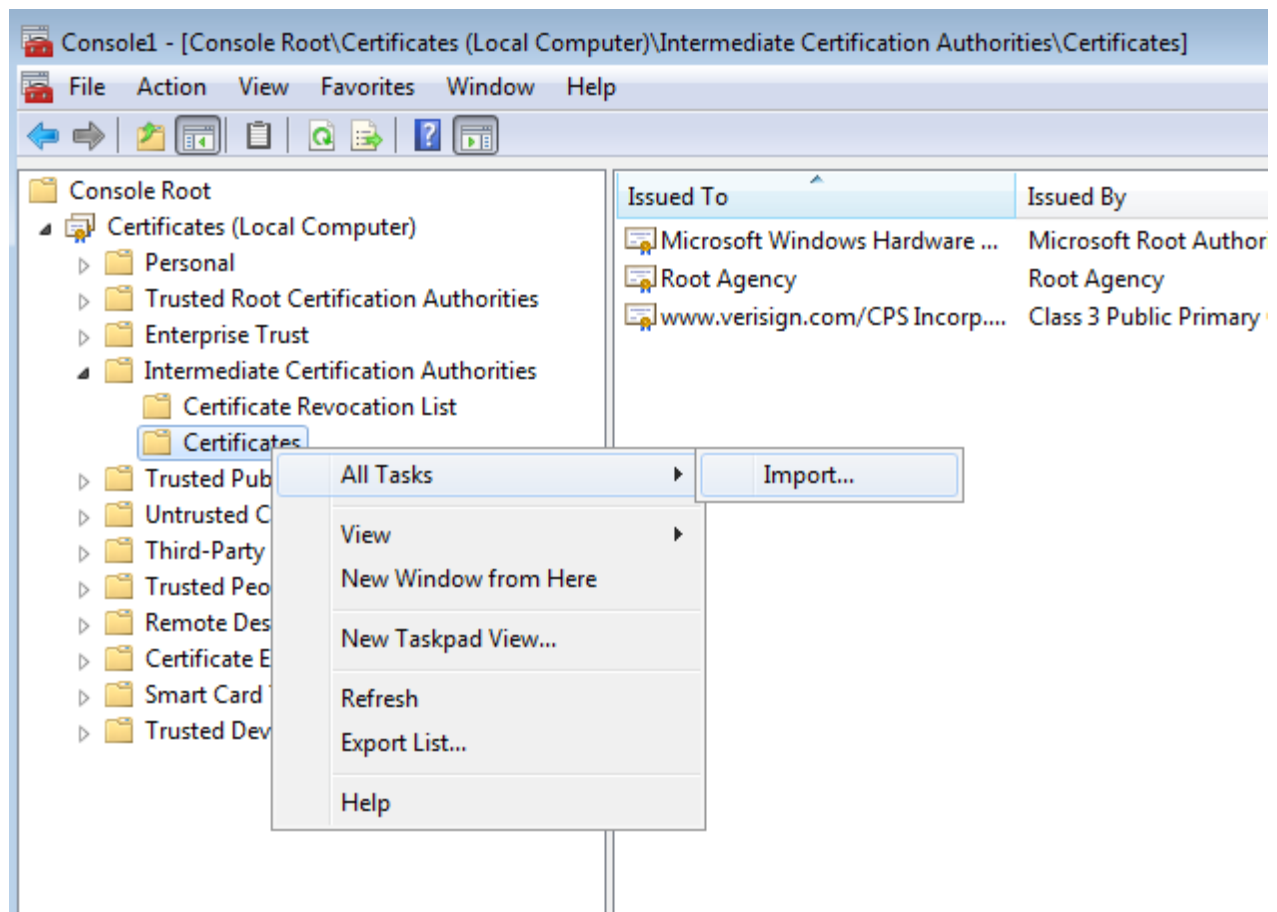
< Back Next > Cancel

Completare l'importazione premendo il pulsante "Finish".



Espandere il menù “Certificates - Local Computer), “Intermediate Certification Authorities”, “Certificates”.

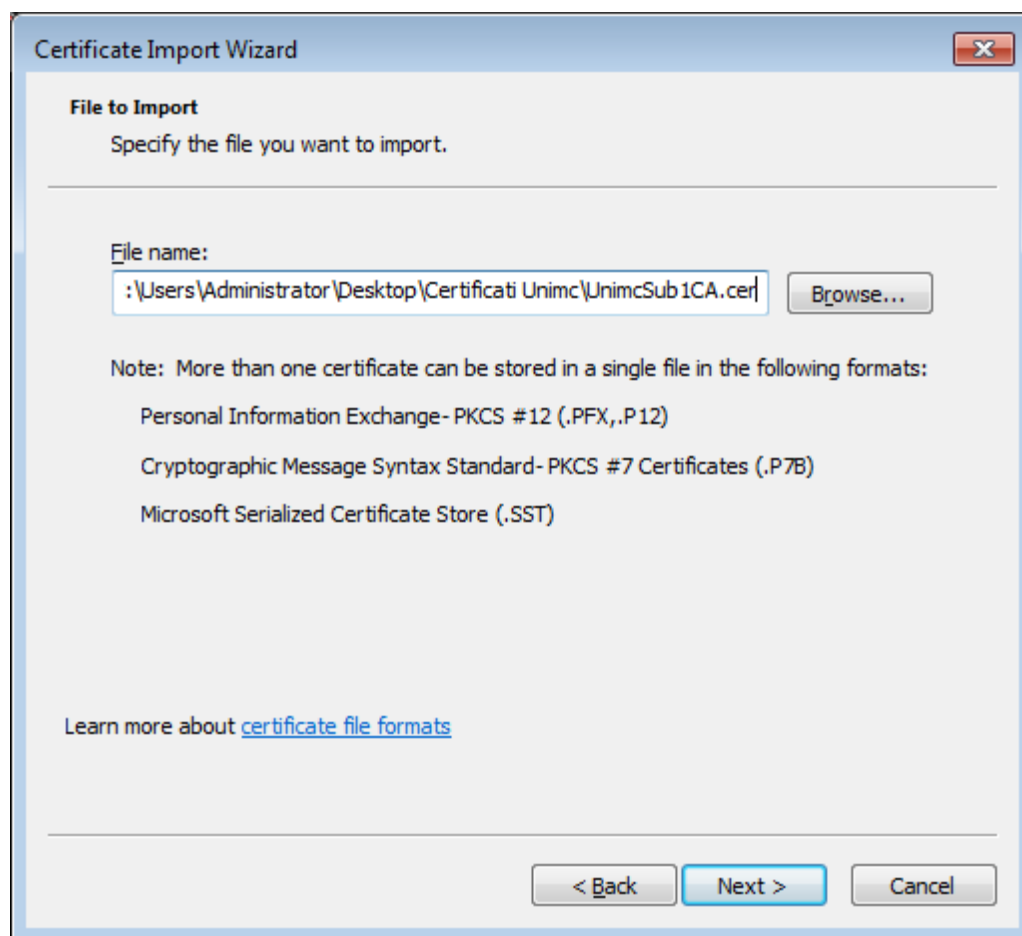
Cliccare con il tasto destro il folder “Cerftificates” e selezionare la voce “All Tasks - Import”.



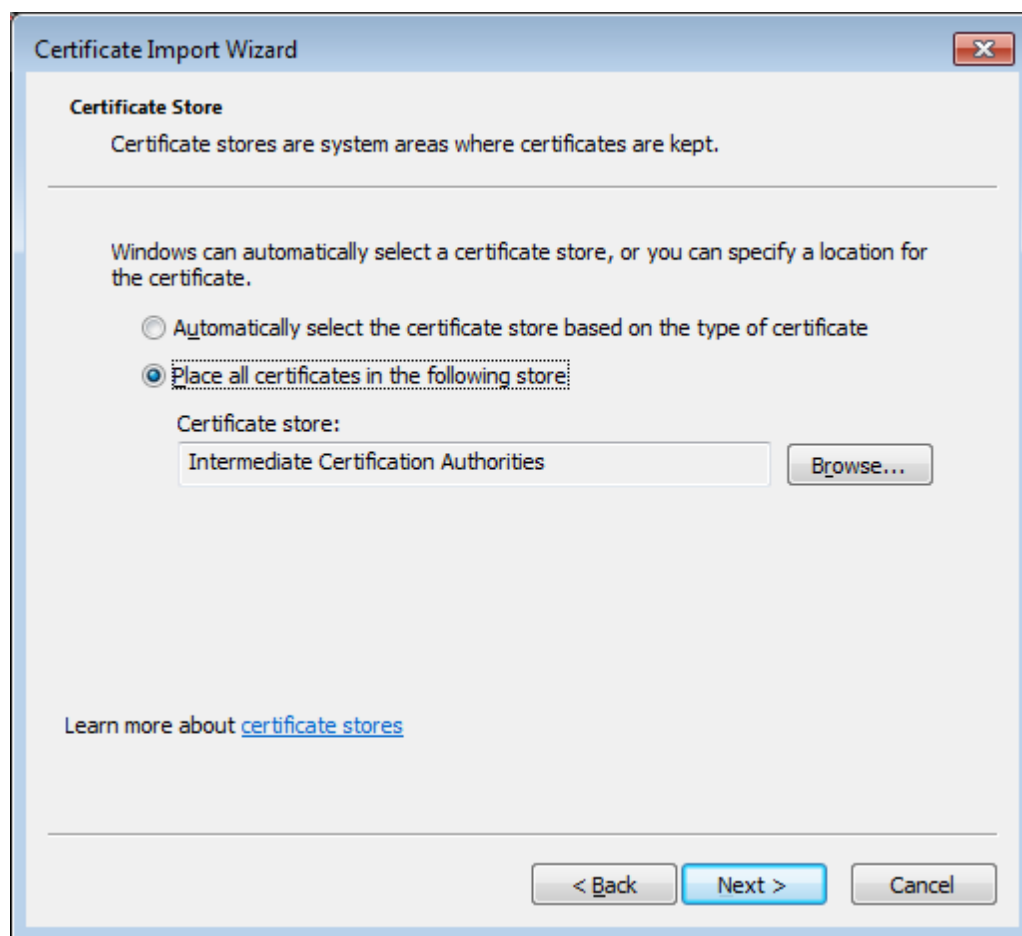
Premere il pulsante "Next".



Premere il pulsante "Browse" e selezionare il certificato UnimcSub1CA.cer



Selezionare l'opzione "Place all certificates in the following store: Intermediate Certification Authorities" e premere il pulsante "Next".



Completare l'importazione premendo il pulsante "Finish".

